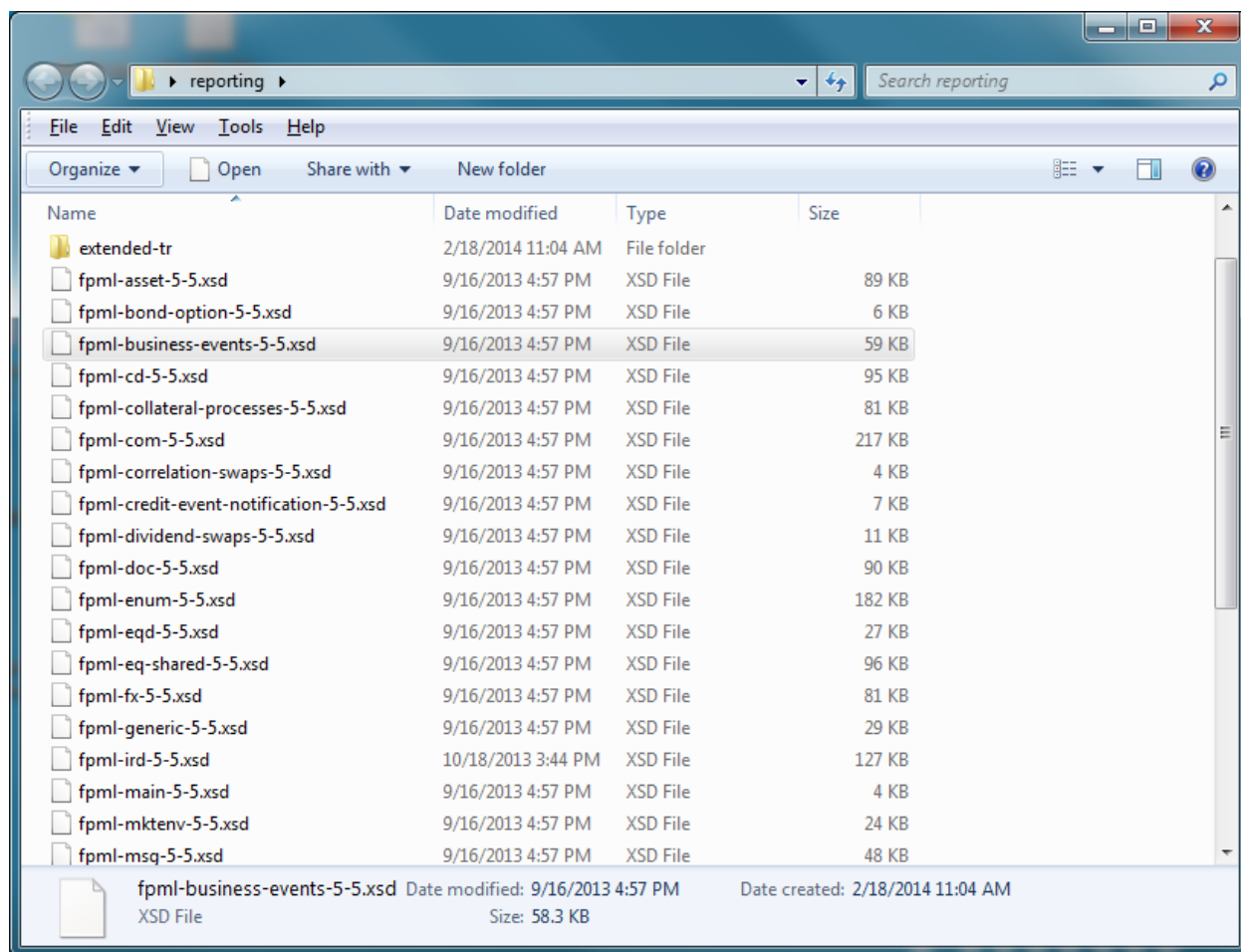


### Guidelines on using extended FpML schema for valuation reporting

This zip file contains the FpML extended schema “extended-tr”, and similar to trade reporting, the directory does not include the official FpML 5.5 schema file. To use this “extended-tr” schema, put the “extended-tr” directory within the same directory of FpML 5.5 schema files, as shown below:



Note that the extended FpML schema in this “extended-tr” directory for valuation **is an exact duplicate** of that used for trade reporting in FpML 5.5, i.e. the one in:

*<AIDG directory>\CSV v2.1 or FpML v5.5\Appendix E - Schemas and Examples in XML Format (Reporting) for FpML 5.5\Extended FpML schema\extended-tr*

One may choose to copy either one “extended-tr” directory to the same directory of FpML 5.5 schema files.